

Docker installation procedure

Preliminary configurations

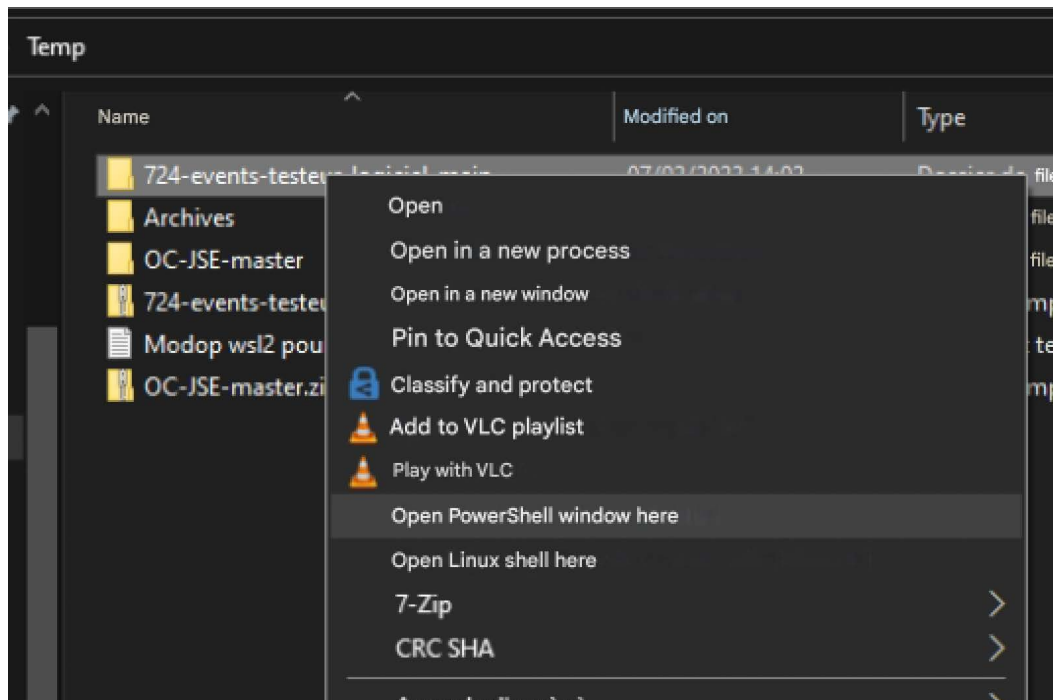
Before installing Docker, perform the following checks:

- Check the version of WSL 2 (Windows Subsystem for Linux).
- Check the Windows Features options;
- Check the BIOS options.

WSL 2

Here are the steps to follow to install and/or update WSL 2:

1. Open Windows PowerShell:
 - a. Either search in the dedicated Windows field
 - b. or hold down the "shift" key and right-click on the directory where you want to open the terminal.



2. Then enter the following command: `wsl --status`
3. Depending on what is displayed on the terminal, enter the following command: `wsl --install` or the following command: `wsl --update`
4. Check that everything is OK with: `wsl --status`

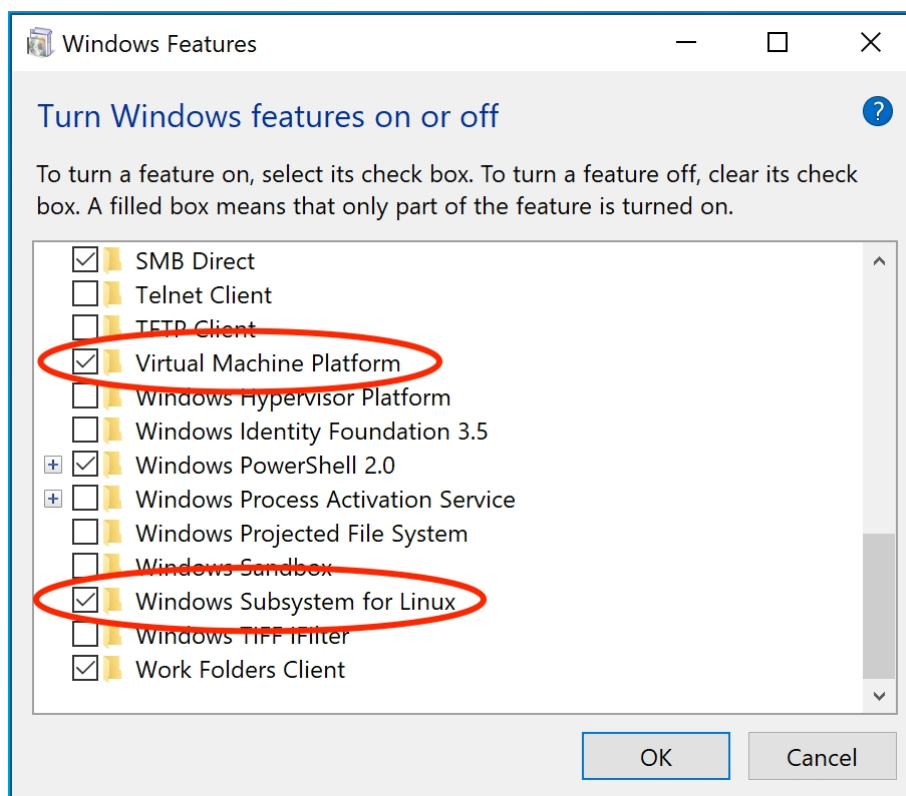
```
Windows PowerShell
PS C:\Temp\projet5\projet5> wsl --status
Distribution par défaut : Ubuntu
Version par défaut : 2
PS C:\Temp\projet5\projet5>
```

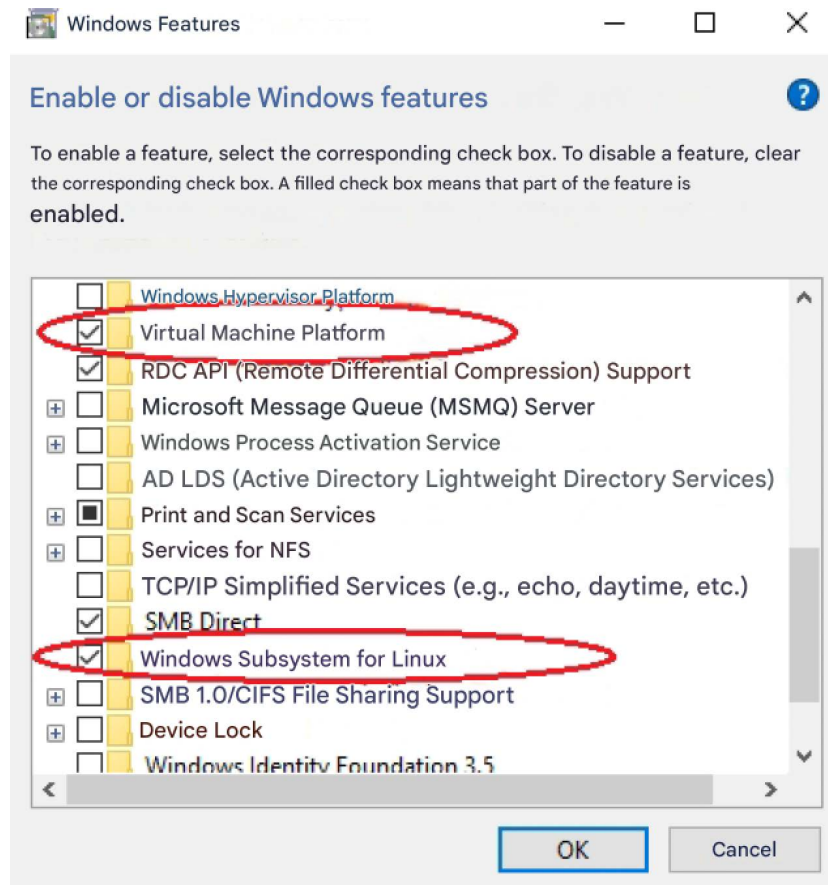
You should be running version 2. This is the version required for Docker to work properly.

Windows Features

Check the Windows features as shown below. The following two features should be checked:

- Virtual Machine Platform
- Windows Subsystem for Linux





Check the BIOS

Follow the instructions in [this documentation](#) to access your PC's BIOS. Then follow the instructions in [this article](#) to check and configure the BIOS. This check will enable your PC to run a virtual machine.

Install Docker

Follow the steps below:

1. Download [Docker Desktop for Windows](#).
2. Start the Docker installation.
3. Follow the instructions.
4. Once the installation is complete, restart your PC.

You should now have a working Docker on your workstation.