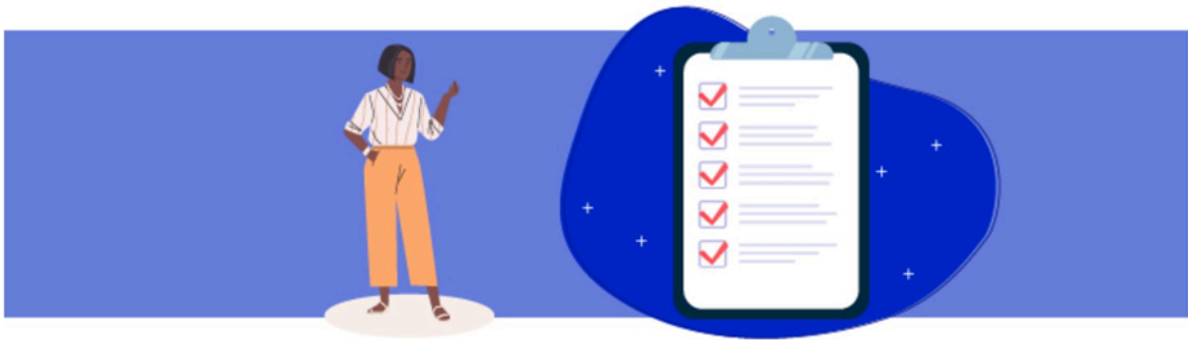


Install and Configure Windows 11

Over to You!



P1C3: Install Windows 11

Reminder of the instructions

In your previous task, you downloaded the ISO for the Windows 11 edition that matched your manager's needs. She is now asking you to install the operating system on a virtual machine so it can be tested.

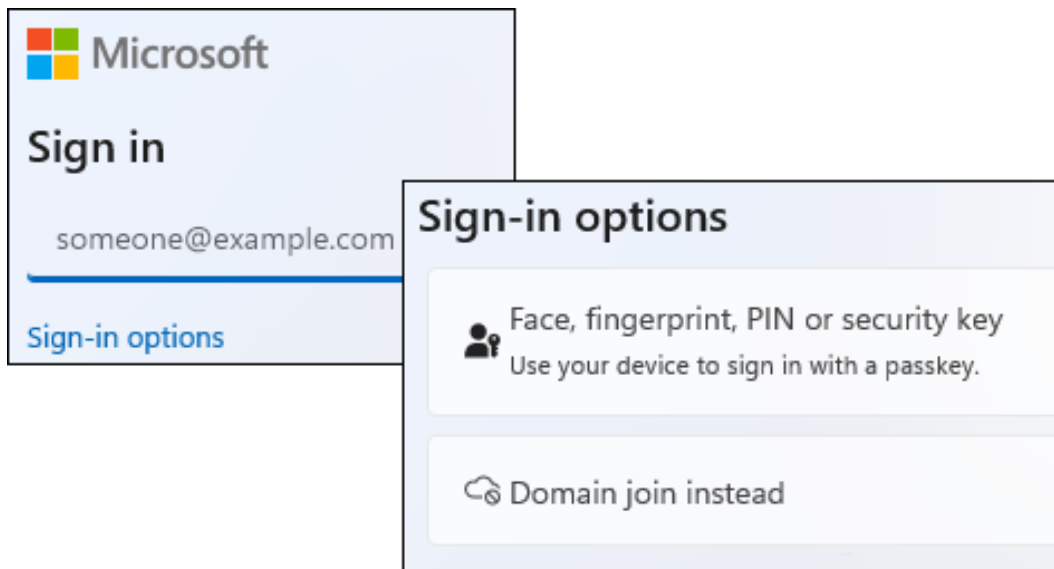
You need to complete the full Windows 11 installation while making sure to:

- Create a local user named "silva".
- Assign that user a strong password with at least 12 random characters, including lowercase letters, uppercase letters, numbers, and special characters.

Proposed answer

During the initial OOB setup, do not sign in with a Microsoft account.

Click "Sign-in options", then click "Domain join instead" to create a local account that exists only on this machine.



Enter the username "silva".

Set a password that follows the required security rules, for example:
*tPEva)E7mp5

